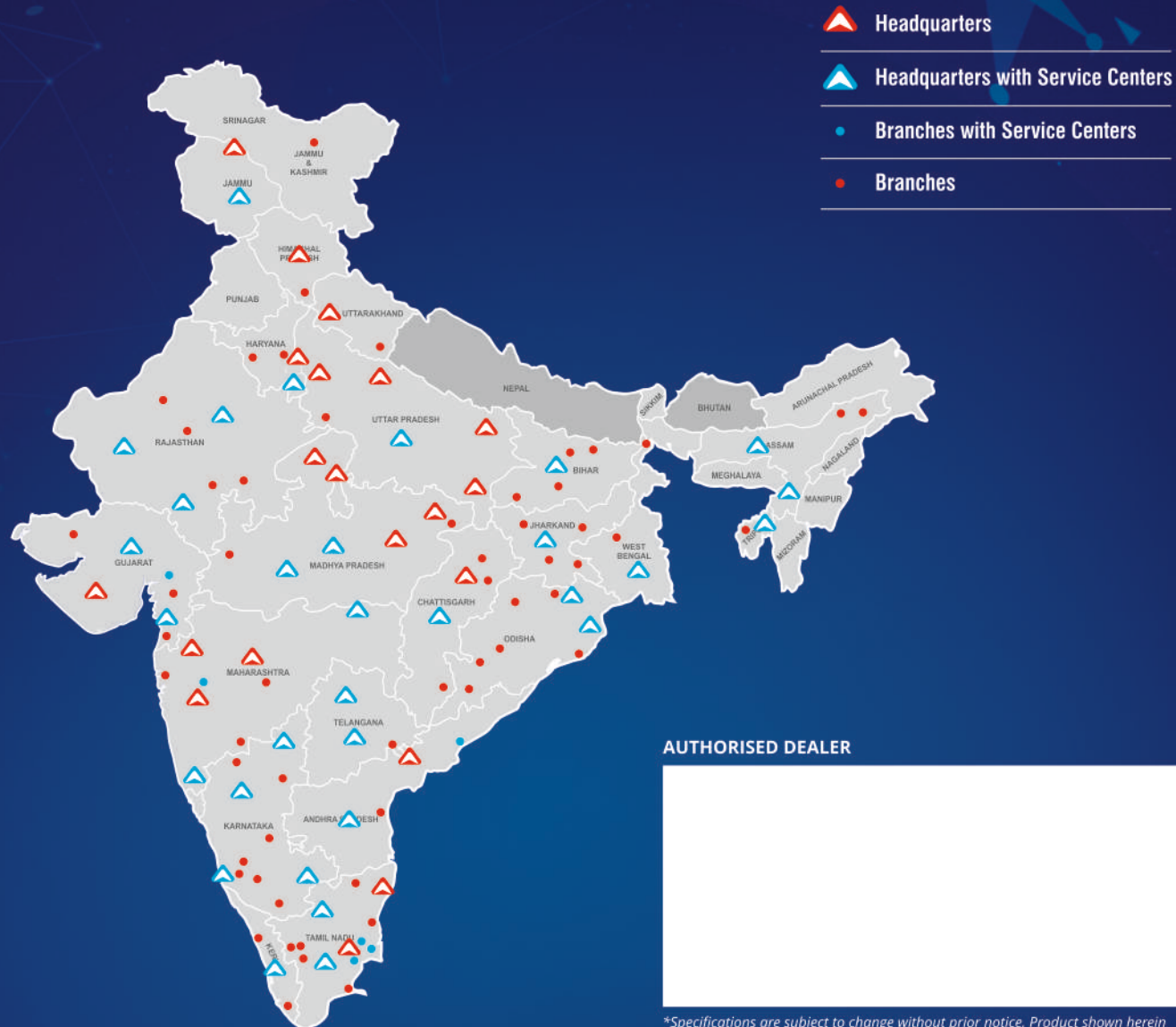


UNPARALLELED NETWORK

in CONCRETING INDUSTRY



AUTHORISED DEALER



*Specifications are subject to change without prior notice. Product shown herein may include optional scope of supply. T&C Apply.



Please Scan to know more about Ajax

The Next-Gen 360° Concreting Solutions



AJAX
MAKES CONCRETE SENSE

Follow us on [f](#) [i](#) [in](#) [t](#) [v](#) Toll Free No: 1-800-419-0628 www.ajax-engg.com

Registered Office - AJAX ENGINEERING LIMITED (Formerly known as Ajax Engineering Pvt. Ltd.), #253/1, 11th Main, 3rd Phase, Peenya Industrial Area, Bengaluru-560 058.
CIN No.: U28245KA1992PLC013306 | T: +91 80 6720 0082, 6720 0083 | Email: customercare@ajax-engg.com

ARGO SERIES SLCM

The Next-Gen 360°
Concreting Solutions

CEVStage
COMPLIANT



ERDI
TECHNOLOGY

TURBO
CHARGER

*Available only in select models

**MADE IN
INDIA**
MADE FOR THE WORLD

ARGO SERIES

In the 1990s, AJAX was the pioneer in introducing the concept of Self-Loading Concrete Mixer (SLCM) to our nation standing by the values, beliefs & hopes of millions of concreting workers' households and now, it has become the largest SLCM manufacturer in the world. AJAX provides complete concrete solutions in supporting the infrastructure sector thereby boosting Infrastructure Economy. ARGO Model's mantra is 'Maximum Productivity; Optimal Investment': Doing more with less; One extra-ordinary machine that can do the work of 10 ordinary men will result in very good savings in terms of Return on Investment. The unrivalled versatility and efficiency would greatly deliver a reliable mix producing optimal concrete batches resulting in greater productivity with minimal skill or effort involved that can be operated at ease by an operator. AJAX Engineering Limited has launched its new range of CEV Stage-V ARGO SLCMs that entail a series of new ARGO products to meet a wide range of applications for customers.

The new CEV Stage-V engines are more environment friendly with well proven CRDi technology and after treatment system that reduces emission levels. The New AJAX ARGO SLCM offers a host of features that provide highest productivity as well as value added features like Load Cells, Advanced Telematics and Admixture Dosing Unit, many more features for varied applications such as Irrigation, Roads, Bridges, Buildings, Railways, Renewable Energy, Infrastructure projects etc.

AJAX, always believes in "CUSTOMER FIRST" focus and all its products are designed and manufactured in the state-of-the-art plant and backed by the widest dealer Network of over 53 Dealers with more than 100 Branch Offices to offer the best- in-class after sales support to ensure maximum uptime for its customers.



PROVEN & TESTED IN INDIAN TOUGH TERRAINS

- New fuel efficient CEV Stage-V engine.
- Superior engine performance.
- Engine control unit (ECU) equipped with CRDi (Common Rail Direct Injection) system - Provides higher output power and torque rise while offering exceptional fuel efficiency.
- The CEV Stage-V Engine has After Treat System (ATS) consisting of Engine Gas Recirculation (EGR) and Diesel Oxidation Catalyst (DOC) which reduces the carbon emission and latest technology of Selective Catalytic Reduction (SCR) (from 110 hp) uses Adblue into the system.



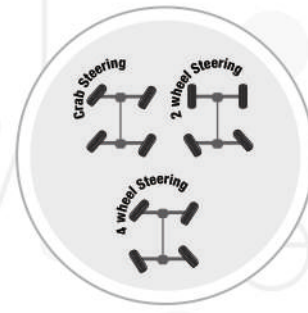
DIGITAL CLUSTER DISPLAY



APPLICATIONS



SALIENT FEATURES



3 WAY STEERING

3 way steering ensures tight turning radius and excellent manoeuvrability, ideal for work in confined space



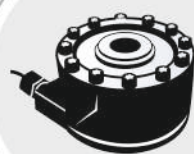
4 WHEEL DRIVE

Truly an Off-roader acting as a tough terrain vehicle with good tight-turning radius and higher gradeability with Improved traction contributing to better grip on slippery & harsh terrains



LOADING BUCKET

Smooth flow of materials in to the drum with NO spillage



LOAD CELL WEIGHING SYSTEM*

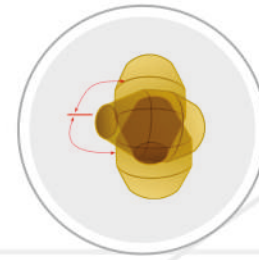
Load cell weighing system defines a paradigm Shift in concreting, with the best-in-class weighing accuracy for cement, fine & coarse aggregates

**Patent Applied for*



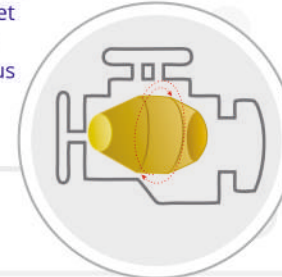
SMART CBC (CONCRETE BATCH CONTROLLER)

Ensures desired quality of concrete is delivered as per mix design by allowing the operator to calibrate the quantity of aggregates into the mixer, User friendly switch controls, Alpha numeric keypad with TFT colour display, Multiple recipe option & storage up to 10000 batches with Water/additive auto cut-off



AUTO MIXING MODE

Auto mixing ensures complete mixing cycle due to pre-set duration resulting in the best-in-class homogeneous concrete.



ELECTRO HYDRAULIC DRUM CONTROL UNIT

Independent controls unit for varying Engine speed without affecting the Drum rotation resulting in best-in-class Fuel Economy with substantial cost savings



DRUM SWIVEL MODE

Gives an extra edge to the operator to reach the farthest point for placing concrete that provides operator better productivity & operator efficiency



ADMIXTURE DOSING UNIT

A separate design unit for dosing admixer to the drum.



JOYSTICK & LEVER OPERATIONS

Ease of operation with effective hydraulic controls sitting inside the operator's cabin having complete control over bucket, slide gate, loading arm, drum lift & drum swivel



TELEMATICS

IoT enabled Fleet-tracking & monitoring system through telematics that also ascertains fuel efficiency, offline/online monitoring & real time reports



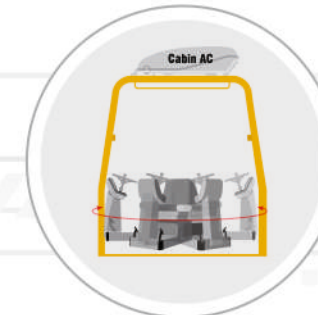
CENTRALIZED GREASING SYSTEM

#Enhances the life of internal components
Subject to conditions



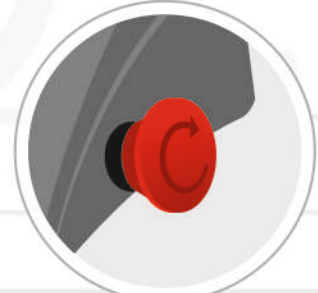
REAR VIEW CAMERA

Vehicle reversing camera with display unit provides wider field of vision that helps in monitoring the loading / unloading operations from sitting inside the cabin



CABIN ERGONOMICS

Swivelable operator's post 180° provides good visibility both during driving, loading & discharging with best-in-class comfort & ease of operations to the operator



HYDRAULIC WET DISC BRAKES

Better control on terrains by engaging both front and rear axle in operation

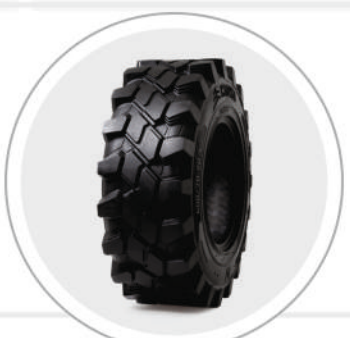
EMERGENCY PARKING BRAKE SYSTEM

Ensures Safety and hazard on any working & static condition



AUTO CLEANING MODE

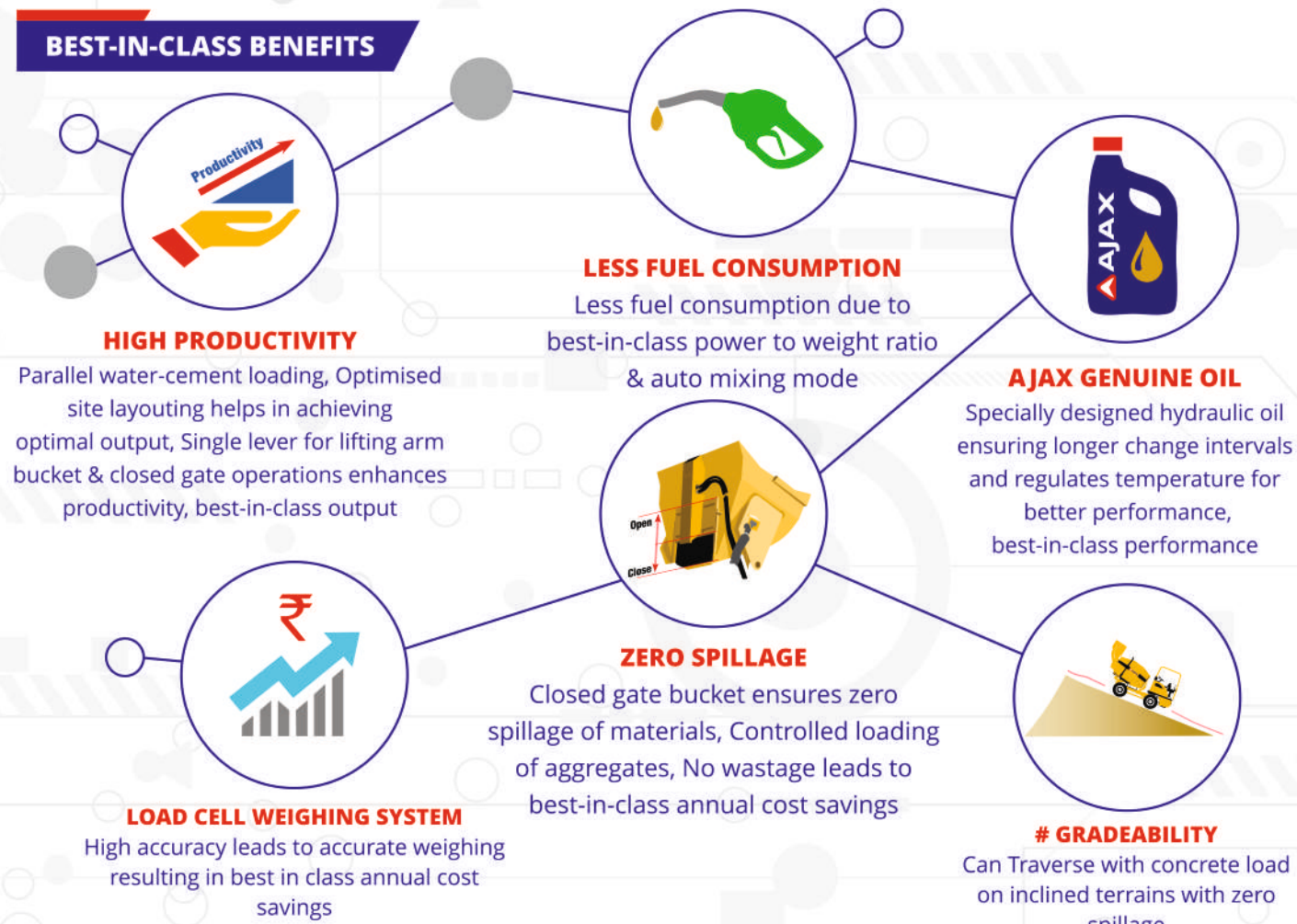
Auto cleaning facilitates complete drum cleaning thereby minimizing concrete setting and optimal water usage.



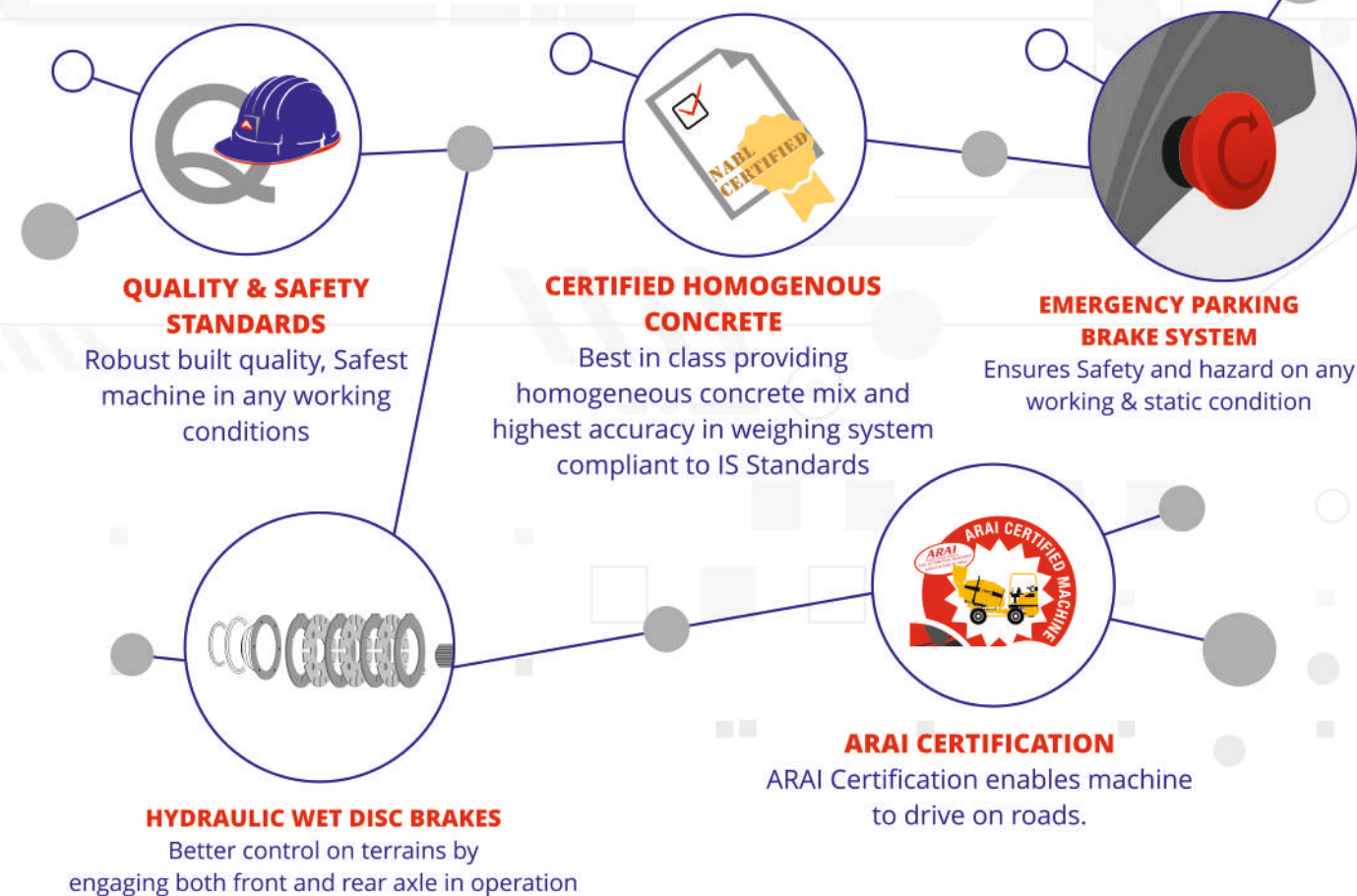
BI-DIRECTIONAL TYRES

Flat bi-directional tread pattern with high lug-to-void ratio equipped with void guard protection

BEST-IN-CLASS BENEFITS



SAFETY FEATURES, STANDARDS & CERTIFICATIONS

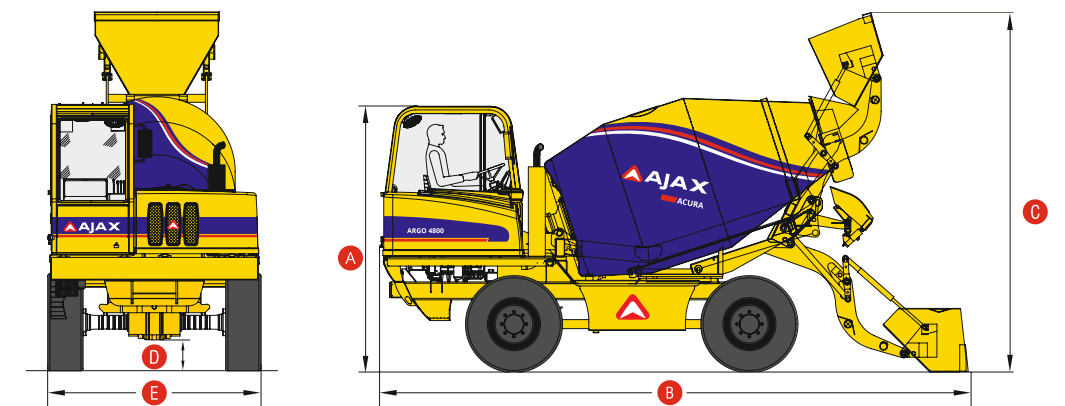


TECHNICAL SPECIFICATIONS

PARAMETER	ARGO 2000	ARGO 2500	ARGO 3000	ARGO 4500	ARGO 4800
Available Engines	KIRLOSKAR: 36.09kw @ 2200 rpm, 4 Cylinder Inline, Water Cooled, CEV Stage V Engine	ESCORTS KUBOTA: 43.25kw @ 2000 rpm, 4 Cylinder Inline, Water Cooled, CEV Stage V Engine	KIRLOSKAR: 54.8kw @ 2200 rpm, 4 Cylinder Inline, Water Cooled, Naturally Aspirated, CEV Stage V Engine MAHINDRA: 55kw @ 2200 rpm, 4 Cylinder Inline, Water Cooled, Turbo Charged Inter-cooled, CEV Stage V Engine	KIRLOSKAR: 81kw @ 2200 rpm, 4 Cylinder Inline, Water Cooled, Turbo Charged Inter-cooled, CEV Stage V Engine MAHINDRA: 83.5kw @ 2200 rpm, 4 Cylinder Inline, Water Cooled, Turbo Charged Inter-cooled, CEV Stage V Engine TATA: 101.5kw @ 2200 rpm, 4 Cylinder, Water Cooled, Turbo Charged Inter-cooled, CEV Stage V Engine	KIRLOSKAR: 81kw @ 2200 rpm, 4 Cylinder Inline, Water Cooled, Turbo Charged Inter-cooled, CEV Stage V Engine TATA: 101.5kw @ 2200 rpm, 4 Cylinder, Water Cooled, Turbo Charged Inter-cooled, CEV Stage V Engine
Chasis	Rigid Type	Rigid Type	Rigid Type	Rigid Type	Rigid Type
Weighing Technology	Pressure Transducer	Pressure Transducer / Load Cell	Pressure Transducer / Load Cell	Pressure Transducer / Load Cell	Load Cell
Drum Capacity	2 cu.m.	2.5 cu.m.	3 cu.m.	4.5 cu.m.	4.8 cu.m.
Max. Drum Rotation Speed	0-18 rpm	0-18 rpm	0-18 rpm	0-18 rpm	0-18 rpm
Unladen Weight	5661 kg	6310 kg	7400 kg	8890 kg	9140 kg
Variant	Non-Swivel	Non-Swivel / Swivel	Non-Swivel / Swivel	Non-Swivel / Swivel	Non-Swivel / Swivel
Tyre Spec	12.0 / 75 - 18 - 14 PR	12.5 / 80 - 18 - 16 PR	12.5 / 80 - 18 - 16 PR	405 / 70-20 Mt54 14 PR (HD)	16 / 70-20 20 PR
Water Tank Capacity	360 L	420 L	600 L	800 L	800 L
Fuel Tank Capacity	64 L	64 L	100 L	135 L	135 L
Hydraulic Tank Capacity	82 L	82 L	110 L	110 L	110 L
Adblue Tank Capacity	NA	NA	NA	16 L	16 L
Bucket Capacity	320 L	400 L	400 L	600 L	625 L
Water Pump Capacity	230 lpm	230 lpm	230 lpm	300 lpm	400 lpm
Vehicle Speed	22 kmph	22 kmph	23 kmph	28 kmph	28 kmph
Gradeability	22°	22°	19°	21°	21°
Drive	Full Time 4 Wheel Drive	Full Time 4 Wheel Drive	Full Time 4 Wheel Drive	Full Time 4 Wheel Drive	Full Time 4 Wheel Drive

*Derived with concrete slump capacity ≤50mm

DIMENSIONS



Dimension (mm)	ARGO 2000	ARGO 2500	ARGO 3000	ARGO 4500	ARGO 4800
A	2887	2947	3010	3024	3042
B	6132	6000	6345	6973	7112
C	3320	3750	3850	4330	4290
D	280	315	360	373	373
E	2177	2200	2370	2480	2530