

**100+ YEARS OF EUROPEAN
TRUST & COMMITMENT**



Next Step To Future

XS12 W

1.2 Ton Capacity
Electric Walkie Stacker



WHY BUY ME?

- ✓ Highly specialized drive and hydraulic system ensure excellent driving performance and high reliability.
- ✓ AMP connector and durable electric wires greatly reduce malfunction of components.
- ✓ Safety hydraulic design prevents mast from falling down abruptly when oil pipes cutoff.
- ✓ Ergonomic tiller head for effortless and comfortable operations.
- ✓ Tiller with long arm for smooth steering.
- ✓ Maintenance-free battery
- ✓ Low-voltage cut-off protection
- ✓ Side operating ensures excellent visibility.
- ✓ On- Board Charger.
- ✓ Easy Maintenance – detachable rear panel.
- ✓ Self- Diagnostics signal on the digital display allows easy trouble-shooting.



TOLL FREE NUMBER- 1800 270 1123

BRAND HISTORY

1917



Founded in **1917**; starts in 1918 the production of cars

1933



In **1933**, acquisition by FIAT Group

1937



In **1937** The Plants Of Milan And Brescia Are Unified And The agricultural Machinery Division Of Suzzarals Incorporated With The Growth Of 3 New Segments :
1.Buses, Trucks, **2.**Rail Equipment, Agricultural Tractors, Forklift Trucks, Marine Engines
3.Engine Pumps And Cooling Systems

1957



In **1957** OM becomes FIAT Carrelli Elevatori, belonging to IVECO Division

1961



In **1961** PIMESPO, Piccola Industria Meccanica sul Po was born in Luzzara, manufacturing WH Trucks

1981



In **1981** FIAT IVECO acquires PIMESPO.

1992



In **1992** LINDE Group acquires from FIAT the Forklift Division.

2002



In **2002** the Company changes his name into OM Carrelli Elevatori keeping the Brand OM PIMESPO.

2005



In **2005** Luzzara becomes a Plant for the whole STILL Group

2006



In **2006** Linde, Still and OM are unified into the KION Group.

2017



In **2017**, OM launched in Indian market.



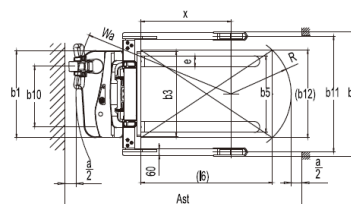
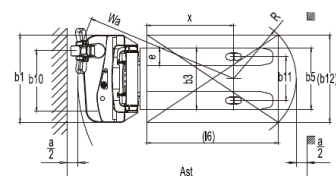
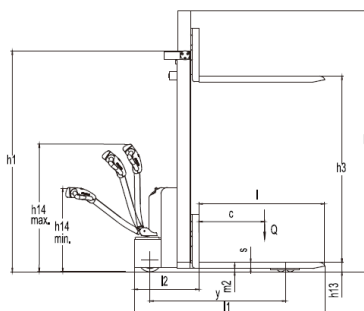
OVERALL DIMENSIONS AND SPECIFICATIONS FOR ELECTRIC WALKIE STACKER

1.1	Brand		OM
1.2	Model designation		XS12-W
1.3	Drive unit		Electrical
1.4	Operator type		Pedestrian
1.4	Rated capacity Q	kg	1200
1.5	Load center distance c	mm	600
1.6	Load distance centre of drive axle to fork x	mm	795
1.7	Wheelbase y	mm	1240
1.8	Service weight include battery	kg	661
1.9	Axle loading, laden driving side/loading side	kg	845/1016
1.10	Axle loading, unladen driving side/loading side	kg	536/125
1.11	Tyre type Driving wheels/Loading wheels		PU
1.12	Tyre size, driving wheels diameter×width	mm	210×70
1.13	Tyre size, loading wheels diameter×width	mm	80×60
1.14	Tyre size, caster wheels diameter×width	mm	130×55
1.15	Wheels, number driving caster/loading (x=drive wheels)	mm	1x +1/4
1.16	Track width, front,driving side b	mm	533
1.17	Track width,rear,loading side b	mm	400
1.18	Height, mast lowered h_1	mm	2352
1.19	Lift height h_3+h_{13}	mm	3615
1.20	Tillers head hieght in driving position min./max. h	mm	860 / 1200
1.21	Fork height lowered h_{13}	mm	88
1.22	Height mast extended h_4	mm	4121
1.23	Overall length l_1	mm	1790
1.24	Length to face of forks l_2	mm	590
1.25	Overall width b_1 / b_2	mm	590
1.26	Fork dimensions s / e / l	mm	60 / 170 / 1150
1.27	Fork carriage width b_3	mm	680
1.28	Distance between fork-arms b_5	mm	570
1.29	Ground clearance, center of wheelbase m	mm	30
1.30	Aisle width for pallets 1000 × 1200 crossways Ast	mm	2225
1.31	Aisle width for pallets 800 × 1200 lengthways Ast	mm	2150
1.32	Turning radius Wa	mm	1408
1.33	Travel speed, laden/ unladen	km/h	4/4.5
1.34	Lifting speed, laden/ unladen	m/s	0.12 / 0.22
1.35	Lowering speed, laden/ unladen	m/s	0.12 / 0.11
1.36	Max. gradeability, laden/unladen	%	3/10
1.37	Service brake type		Electromagnetic
1.38	Drive motor rating S2 60	min	0.65
1.39	Lift motor rating at S3 15%	kw	2.2
1.40	Battery voltage/nominal capacity K20	V/AH	2x12 / 105 - GEL
1.41	Type of drive unit		DC
1.42	Steering type		mechanical
1.43	Sound pressure level at the driver's ear dB(A)		74

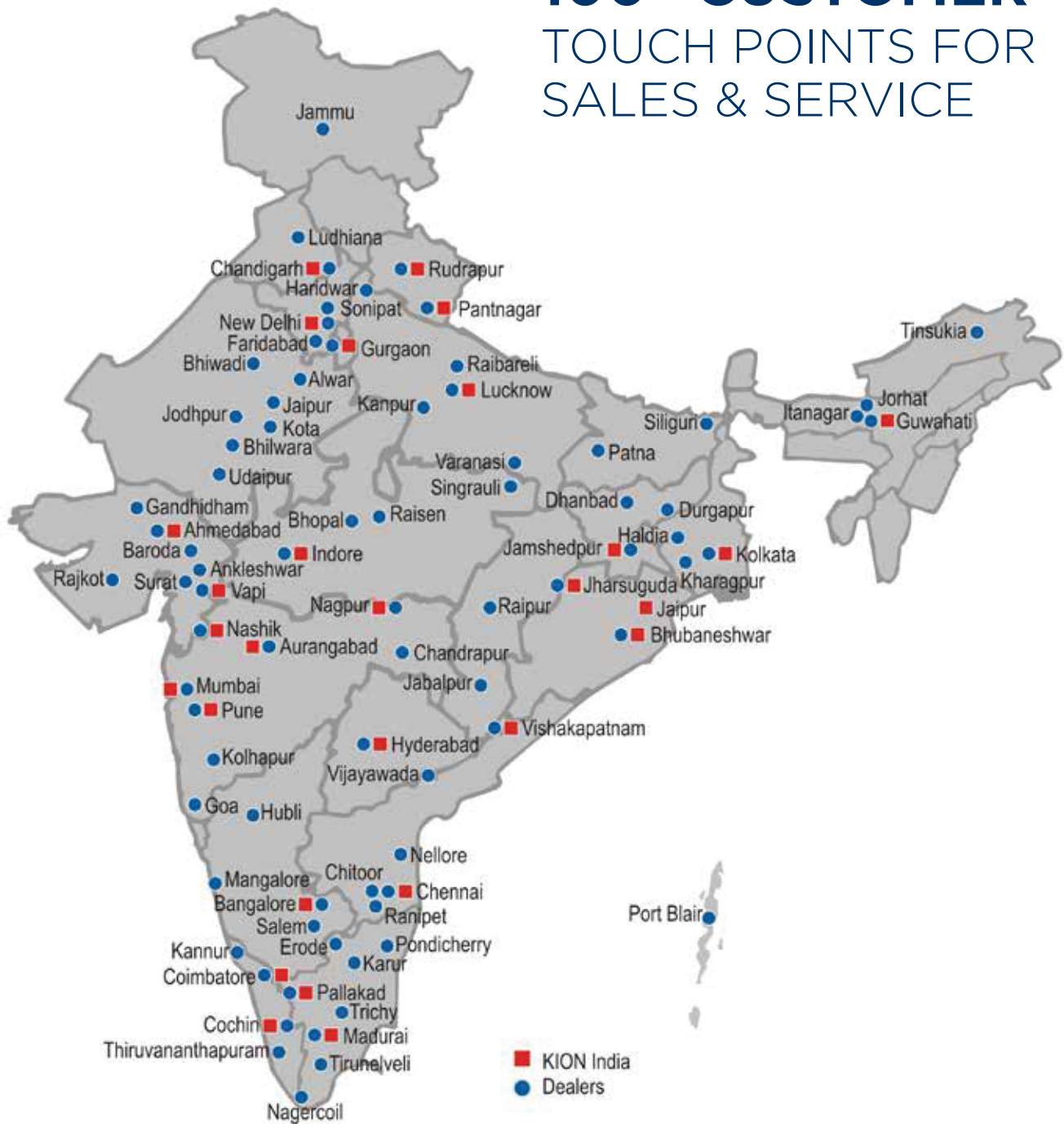
RATED CAPACITIES

Lift Height(mm)	Rated Capacity(kg)
2500	1200
2700	1100
3000	950
3300	800
3600	650

XS12 W



100+ CUSTOMER TOUCH POINTS FOR SALES & SERVICE



Address :

KION INDIA Private Limited, 5/4 Chandan Nagar,
Pune Nagar Road, Pune-411014

TOLL FREE NUMBER- 1800 270 1123